



Meteo Round 9pc Swag Multi-Pendant (LED)

Featuring a softly undulant 11”H oval shade in artisan blown crystal glass that encloses an LED-illuminated cast crystal glass diffuser, this versatile chandelier style enables customization of the placement and height of each pendant. Choose from several glass colors and chain and diffuser styles. For a more traditional look, order with an E26 base that takes one 40W bulb.

Finishes



Burnished
Bronze (BB)



Beige Silver
(BS)



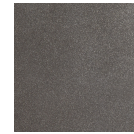
Classic
Silver (CS)



Flat Bronze
(FB)



Gilded Brass
(GB)



Graphite
(GP)

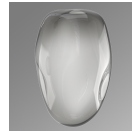


Matte Black
(MB)



Novel Brass
(NB)

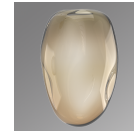
Glass Options



Smoke
(FS,GS,ZS)



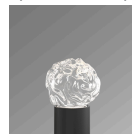
Amber
(FA,GA,ZA)



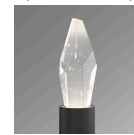
Bronze
(FB,GB,ZB)



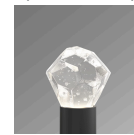
Clear
(FC,GC,ZC)



Floret
(FS,FA,FB,FC)



Geo
(GA,GB,GC,GS)



Zircon
(ZA,ZB,ZC,ZS)

Product Notes - PLEASE READ:

- All Hammerton Studio fixtures are handcrafted by artisans. Subtle imperfections reflect the mark of the maker and should be expected.
- This product may incorporate both steel and aluminum material. Transparent finishes may vary between steel and aluminum components.
- Products incorporating artisan blown and cast glass may create dramatic patterns of light and shadow on surrounding surfaces. While this is often desirable, shadowing can be minimized by adding recessed ceiling light to the installation area.

General Notes:

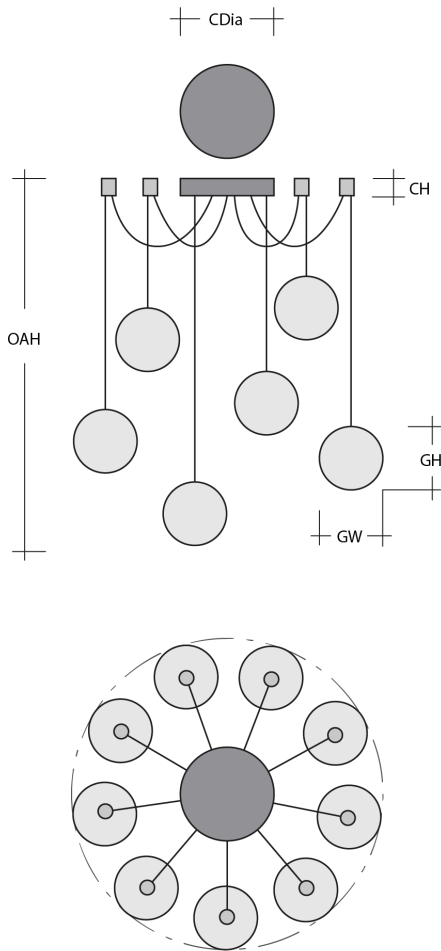
- Visit studio.hammerton.com to read our complete warranty.
- All dimensions are in inches unless otherwise noted. Dimensions may vary up to 7/8".

Revision date: 2025-11-05

Scan for Product &
Install Info



Meteo Round 9pc Swag Multi-Pendant (LED)



Product Dimensions *Dimensions may vary up to 7/8"*

Overall Height	OAH	18.5 – 120 in
Overall Diameter	OADia	17 – 296 in
Canopy Height	CH	2.1 in
Canopy Diameter	CDia	9 in
Notes		

Overall max height and diameter dependent on installation. Radial pendant hooks are Black only and will not be finish-matched to the selected fixture finish.

Glass Dimensions

Meteo Qty		9
Meteo Glass Height	GH	11.1 in
Meteo Glass Width	GW	8 in

Electrical

Bulb/Lamping Qty		9
Bulb/Lamping Type		LED
Wattage		47 watts
Voltage		120 volts
Total Source Lumens		3782 lumens
Dimming Type		TRIAC/ELV
Correlated Color Temp: CCT		2700K or 3000K
Color Rendering Index: CRI		93+
Certification		ETL

Installation & Mounting

Weight: Lbs		69 lbs
Mounting Type		J-Box
Minimum J-Box size		4L X 4W X 1.5D in
Suspension Type		Cloth Cord
Flat or Sloped		Sloped
Max Slope	SA	45 degrees
Slope Orientation		All
Location		Indoor/Dry

Other Information

Warranty		See Website
----------	--	-------------

Project Notes

Name:

Location:

Quantity:

Finish Color:

Glass Color:

Notes: